



# KNIVES AND BL



# ADES

Stanley's biggest ever range  
including the longest  
lasting FatMax® blades

**STANLEY**®



“

Pro's told us that having to change blades regularly was a nuisance, which is why we've developed a blade that lasts more than 5 times longer than competitive utility blades. Tungsten carbide, which offers durability and hardness second only to diamond, is bonded to the edge with a high power laser to create the longest lasting blade that saves them time and effort.

”





# THE PRO'S OPINION

## THE RIGHT KNIFE FOR THE RIGHT JOB

Jannik Olsen, carpenter



### FIXED BLADE KNIVES

These are designed for the heaviest of applications. Although the blade is fixed, the majority of Stanley® Fixed Blade Knives incorporate a rapid blade changing mechanism.



### RETRACTABLE BLADE KNIVES

These offer similar performance to the fixed blade models and the blade can be retracted safely into the handle when not in use.



### SNAP-OFF BLADE KNIVES

The snap-off blade offers constant sharp edges, but is also strong and thick enough to apply heavy pressure without the blade breaking.



### 9MM SNAP-OFF BLADE KNIVES

The thinner 9mm Snap-off blade is ideal for thinner more delicate sheet materials and general craft work.



### CRAFT, SPORT AND POCKET KNIVES

Handy pocket, craft and sports knives ideal for a wide variety of tasks.



## FATMAX® ALL PURPOSE KNIFE - CARBON STEEL BLADE

**STANLEY**  
**FatMax**



- Knife blades hardened to 60 HRC - for added durability and life
- Ground and hand sharpened - for extended first cut sharpness
- Soft grip design for comfortable extended heavy duty use
- Holster with belt clip for convenient knife transport
- 1.5mm Carbon Steel Blade
- Blade Length 3 5/8"

STANLEY	Blade width in mm	Blade length in mm			
0-10-231	1.5	90	-	6	3253560102319

## FATMAX® ALL PURPOSE KNIFE - STAINLESS STEEL BLADE

**STANLEY**  
**FatMax**



- Knife blades hardened to 60 HRC - for added durability and life
- Ground and hand sharpened - for extended first cut sharpness
- Soft grip design for comfortable extended heavy duty use
- Holster with belt clip for convenient knife transport
- A better choice for use around water, especially salt water
- 2.5mm stainless steel blade
- Blade length 3-5/8"

STANLEY	Blade width in mm	Blade length in mm			
0-10-232	2.5	90	-	6	3253560102326

## FATMAX® FIXED BLADE KNIFE

**STANLEY**  
**FatMax**



- Magnetic nose
- Thumb pad
- Blade clamp
- Pop-up blade dispenser
- Ergonomic design ideal for cutting material such as carpet without scrapping knuckles
- Soft touch panels/grips
- Catridge holds up to 5 blades
- Push button blade storage
- Durable, simple and comfortable shape
- Narrow nose ideal for more accurate cutting applications

STANLEY	Length in mm			
0-10-780	170	X	6	3253560107802

## TITAN FB

**STANLEY**



- Stock of blades incorporated in the handle
- Available with sheath
- Ideal for precision cutting of the most flexible to the most resistant materials (paper, cardboard, plastic, leather)
- Supplied with 3 heavy duty blades
- Rear hinge system and tightening wheel for rapid blade changing without tools
- Strong high quality brass wheel for efficient locking of the blade
- Light weight aluminium body combining ease of use and durability

<b>STANLEY</b>	Length in mm			
2-10-550	175	X	12	3253562105509

## 199 E

**STANLEY**



- Knife supplied with an assortment of 5 blades
- Blade holder inside the handle
- Over lapping nose blade locking system for greater safety during cutting
- Zinc alloy body with a grooved surface for comfortable, assured holding

<b>STANLEY</b>	Length in mm			
2-10-199	140	X	12	5000366101996

## UTILITY KNIFE

**STANLEY**



- Supplied with 3 spare blades
- Integrated blade holder
- Interlock patented blade locking system for greater safety during cutting
- Metal knife lacquered and grooved for improved holding

<b>STANLEY</b>	Length in mm			
0-10-299	136	X	12	3253560102999

## FATMAX® PRO TWIN BLADE KNIFE

**STANLEY**  
**FatMax**®


- Twin Blade Sliders
- Instant Blade Change Button
- Thumb Pad for extra grip
- Blades Storage for 5 blades
- Ergonomic design grip
- Interlocking nose for security
- Blade clamp increases Push Back force
- Torsional resistance prevents knife from separating when twisted
- Knife still operates if dropped
- Solvent resistant to: Gasoline, Turpentine, Lacquer, Alcohol, Thinners, Mineral Spirits

<b>STANLEY</b>	Length in mm			
<b>0-10-789</b>	180	X	6	3253560107895

**NEW**

## FATMAX® RETRACTABLE UTILITY KNIFE

**STANLEY**  
**FatMax**®


- Push button blade change
- Thumb rest
- Blade storage lock
- Cartridge holds up to 5 blades
- Torsional resistance prevents knife from separating when twisted
- Temperature resistance: -40°C to +60°C
- Drop testing ensures knife still operates even if dropped
- Solvent resistance ensures resistance to: Gasoline, Turpentine, Lacquer, Alcohol, Thinners, Mineral Spirits
- Corrosion resistance means that knife stays operational even in excessive humidity
- Long life with over 2000 cycles with no deviation

<b>STANLEY</b>	Length in mm			
<b>0-10-778</b>	170	X	6	3253560107789

## QUICK CHANGE KNIFE

**STANLEY**


- Interlock system - lateral locking of the blade
- Slot for cutting string
- Anti-sliding support zone for the thumb
- Metal body for heavy duty use
- Integrated wire snap off blade knife
- Thumb pressure pad
- Supplied with 3 blades
- 8-blade storage holder - accessible without tools
- Quick blade change through simple pressure on yellow button
- Ergonomic bimaterial body - for precise guiding of the cut and comfort of use

<b>STANLEY</b>	Length in mm			
<b>0-10-788</b>	180	X	6	3253560107888

## TITAN RB

**STANLEY**



- Rear hinge and tightening wheel system for quick blade changing without tools
- Steel blade holder
- Ideal for precision cutting of the most flexible to the most resistant materials (paper, cardboard, plastic, leather)
- Ergonomic shape
- Available with scabbard
- Supplied with 5 blades
- Available with sheath
- Lacquered body for better comfort during use
- Strong high quality brass wheel for efficient locking of the blade
- Lightweight aluminium body combining ease of use and durability

<b>STANLEY</b>	Length in mm			
<b>2-10-122</b>	185	X	12	3253562101228

## SPRINGBACK KNIFE

**STANLEY**



- Safety knife with self retracting blade
- Supplied with special round nose heavy duty blade for ultimate safety (1992 trapezoid blade)
- The blade remains outside as long as a thumb is kept on the push button and retracts automatically when the button is released
- Zinc alloy body, very resistant and light
- Contoured handle with diagonal ribs for slip-resistant grip
- Safe, Inter-locking nose
- Epoxy Paint
- Blade storage inside the handle
- Blade Extension 1,7 cm

<b>STANLEY</b>	Length in mm			
<b>0-10-189</b>	155	X	6	3253560101893

## 99 E RETRACTABLE BLADE KNIFE

**STANLEY**



- The one and only original Stanley retractable knife
- Interlock nose firmly secures blade into knife
- Blade holder inside the handle
- Rounded push button
- Blades stored inside the handle
- A positioning stop allows better holding of the blade
- 5 blade positions allows wider usage for variety of cutting applications
- Total blade blocking even during difficult cuts
- Precision die cast zinc body both strong and lightweights
- Knife supplied with a range of 5 blades

<b>STANLEY</b>	Length in mm			
<b>2-10-099</b>	155	X	12	3253562100993
<b>1-10-099</b>	155	-	12	3253561100994



## FATMAX® KNIFE HOLSTER

**STANLEY**  
**FatMax**



- Cut proof plastic interior to resist wear and punctures
- Strong belt clip for attachment
- 600 denier polyester for long life
- Heavy-duty stitching to perform under heavy usage
- Pocket for 10 pack blades for convenience
- Pouch fits all Stanley knives
- Ideal for 1992 blades

<b>STANLEY</b>				
0-10-028		X	6	3253560100285

**STANLEY**

## SNAP-OFF BLADE KNIVES

### FATMAX® PRO SNAP OFF KNIFE - 25 MM

**STANLEY**  
**FatMax**



- FatMax® XL Snap-Off Blade Knife
- Integrated blade snapper – For safe and convenient blade breaking
- Stainless steel blade cassette – Smooth blade extension and retraction
- Wide 25mm blade for heavy duty, intensive applications
- Ribbed handle – Improves grip and prevents slip when in use
- Extra long body – For two handed grip when extra cutting force is needed
- No tools required for blade changing for speed and ease
- Locking knob ideal for heavy duty applications
- Die cast aluminium housing for strength and durability
- Stainless steel cartridge holds 4 blades

<b>STANLEY</b>	Blade width in mm	Length in mm			
0-10-820	25	210	X	6	3253560108205

### 9MM FATMAX® SNAP-OFF KNIFE

**STANLEY**  
**FatMax**



- ABS bimaterial body for an excellent grip
- Blade wiper removes excess debris to prolong the life of the knife
- Removable blade snapper ensures faster and safer removal of a worn segment
- Cartridge holds up to 6 blades
- Instant blade replacement
- Soft grip bi-material handle for comfort and control
- Stainless steel cartridge holds 6 blades
- Carriage of stainless steel blade: longevity and perfect guidance of the blade
- Automatic blocking of the blade for safe use

<b>STANLEY</b>	Blade width in mm	Length in mm			
0-10-475	9	138	X	6	3253560104757

## 18MM FATMAX® SNAP OFF KNIFE

**STANLEY**  
**FatMax**



- ABS bimaterial body for an excellent grip
- Blade wiper removes excess debris to prolong the life of the knife
- Removable blade snapper ensures faster and safer removal of a worn segment
- Cartridge holds up to 6 blades
- Instant blade replacement
- Soft grip bi-material handle for comfort and control
- Stainless steel cartridge holds 6 blades
- Carriage of stainless steel blade: longevity and perfect guidance of the blade
- Automatic blocking of the blade for safe use
- Delivered with FatMax® blades

<b>STANLEY</b>	Blade width in mm	Length in mm			
<b>0-10-481</b>	18	180	X	6	3253560104818

## FATMAX® 25MM SNAP-OFF KNIFE

**STANLEY**  
**FatMax**



- ABS bimaterial body for an excellent grip
- Blade wiper removes excess debris to prolong the life of the knife
- Carriage of stainless steel blade: longevity and perfect guidance of the blade
- Removable blade snapper ensures faster and safer removal of a worn segment
- Cartridge holds up to 4 blades
- Instant blade replacement
- Soft grip bi-material handle for comfort and control
- Stainless steel cartridge holds 4 blades
- Automatic blocking of the blade for safe use
- Double safety with additional blocking by cursor for a perfect maintenance of the blade

<b>STANLEY</b>	Blade width in mm	Length in mm			
<b>0-10-486</b>	25	215	X	6	3253560104863

## DYNAGRIP SNAP-OFF BLADE KNIFE WITH CARTRIDGE

**STANLEY**



- Automatic blade change for quick usage
- Professional quality
- Strong steel blade barrel
- Wheel locking clamps the blade during cutting for greater safety and performance
- Self blocking push button and automatic blade selector
- Stainless steel cartridge holds 6x18mm blades
- Soft grip bi-material handle for comfort
- Carriage blade holder and stainless steel guard to reinforce the longevity and the solidity of the cutter
- Integrated spare blade holder

<b>STANLEY</b>	Blade width in mm	Length in mm			
<b>0-10-480</b>	18	175	X	6	3253560104801

## INSTANT CHANGE SNAP OFF KNIFE

**STANLEY**



- First ever front-loading quick change snap-off knife
- Load blades through traditional method OR through front loading quick change function
- Comfortable soft grip body
- Durable, smooth stainless steel barrel
- Dial wheel lock

<b>STANLEY</b>	Blade width in mm	Length in mm			
<b>STHT0-10186</b>	18	160	X	4	3253560101862
<b>STHT0-10187</b>	25	160	X	4	3253560101879

## INSTANTCHANGE™ SNAP OFF CARPET KNIFE

**STANLEY**



- Front-loading quick change snap-off knife
- Load blades through traditional method OR through front loading quick change function
- Dial wheel lock
- Angled steel barrel for easier cut alignment and more blade exposure to cut through thicker carpet
- Carpet tucker located at the rear of the handle to tuck and secure carpeting over tack strips

<b>STANLEY</b>	Blade width in mm	Length in mm			
<b>STHT0-10188</b>	18	170	X	4	3253560101886

## SNAP OFF BLADE KNIVES - 25 MM

**STANLEY**



- Supplied with 1 blade
- Blade divisible into 7 segments for less frequent blade changes
- 25 mm blade and 0.7 mm thickness improving performance during intensive work
- Dynagrip bimaterial handle
- The blade is blocked by a notched wheel for improved security and cutting precision
- Blade holder support and blade guide in stainless steel to reinforce the longevity and solidity of the snap off blade knife
- Optimal grip and ergonomics

<b>STANLEY</b>	Blade width in mm	Length in mm			
<b>0-10-425</b>	25	180	X	6	3253560104252

## DYNAGRIP SNAP-OFF BLADE KNIFE - 18MM

**STANLEY**



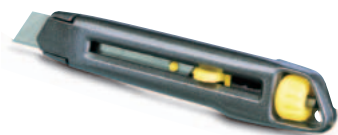
- Blade blocking system using a wheel for greater safety while cutting
- Ergonomic handle in flexible elastomer for long life for comfort in use
- Blade carrier and blade guide in stainless steel for smooth operation, strength and longlife

<b>STANLEY</b>	Blade width in mm	Length in mm			
<b>0-10-418</b>	18	165	X	6	3253560104184
<b>0-10-409</b>	9	135	X	12	3253560104092



## INTERLOCK SNAP OFF BLADE KNIFE - 18 MM

**STANLEY**

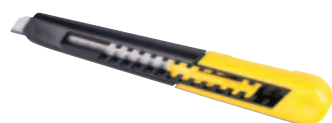


- Quick and easy blade change through notched wheel no tools required
- Anti-sliding ergonomic shape
- Solvent resistant, metal body for strength
- Pushbutton and effective blocking of the blade by a serrated roller notched for an increased safety and a precision of cut
- System interlock of blocking of the blade to prevent the rising of the knife, even under strong pressure

<b>STANLEY</b>	Blade width in mm	Length in mm			
<b>0-10-018</b>	18	165	X	12	3253560100186
<b>0-10-095</b>	9,5	135	X	12	3253560100957

## SM SNAP OFF BLADE KNIFE - 9 MM

**STANLEY**



- Blade snapper included in handle for safety
- Multi-position push button for quick, easy use
- Two part moulded body that allows rapid blade changing
- Blade included in the body of the cutter for more safety

<b>STANLEY</b>	Blade width in mm	Length in mm			
<b>0-10-150</b>	9	130	X	12	3253560101503
<b>1-10-150</b>	9	130	-	24	3253561101502

## SM SNAP OFF BLADE KNIFE - 18 MM

**STANLEY**



- Blade snapper included in handle for safety
- Multi-position push button for quick, easy use
- Two part moulded body that allows rapid blade changing.
- Built in blade snap off functionality

<b>STANLEY</b>	Blade width in mm	Length in mm			
<b>0-10-151</b>	18	160	X	12	3253560101510
<b>1-10-151</b>	18	160	-	24	3253561101519

**NEW**

## FATMAX® PRO TWIN BLADE FOLDING KNIFE

**STANLEY®**  
**FatMax®**


- Multi-tasking with one knife only
- 2 knives in one
- Increased work speed and efficiency
- Allows quick change
- Longer blade-life – use the right blade for the job
- Folds into compact size for convenient storage

<b>STANLEY</b>	Length in mm			
XTHT0-10502	180	X	6	3253560105020

**NEW**

## FOLDING FIXED BLADE KNIFE

**STANLEY®**  
**FatMax®**


- Ergonomic design for comfortable extended heavy duty use
- Metal body for added durability
- Soft hand grip and thumb pad for comfort and control
- Tape Cutter for box opening without damaging contents
- Quick blade change – for speed of use
- Blade storage for convenient blade storage and quick blade replacement
- Belt clip for convenient knife transport

<b>STANLEY</b>	Length in mm			
FMHT0-10827	170	-	2	3253560108274

## FATMAX® RETRACTABLE FOLDING UTILITY KNIFE

**STANLEY®**  
**FatMax®**


- Ergonomic, rugged design for heavy duty use
- Retractable blade for safety and convenience
- Instant blade change for speed of use
- Blade storage for convenience

<b>STANLEY</b>	Length in mm			
0-10-825	140	X	6	3253560108250

## STANLEY® FOLDING KNIFE WITH WOODEN HANDLE AND TORCH

**STANLEY®**


- Classic wood handle combines performance and feel (FSC certified)
- Quick blade mechanism (roll forward)
- Folds to convenient carrying size
- One handed open and close
- Durable stainless steel construction

<b>STANLEY</b>	Blade width in mm	Blade length in mm			
0-10-074	28	70	X	6	3253560100742

## STANLEY® FOLDING UTILITY KNIFE

**STANLEY**



- Thumb stud for easy opening-
- Quick change blade.
- Aluminum handle for durability.
- Stainless steel belt clip.
- Quick change fixed blade.

<b>STANLEY</b>	Length in mm			
0-10-855	160	X	6	3253560108557

## QUICKSLIDE POCKET KNIFE

**STANLEY**



- All metal construction – solid, reliable and long lasting
- Push down and slide safety feature – ensures the blade is not accidentally extended
- Metal belt clip
- One handed operation blade slider – extends the blade easily and quickly
- Pocket size for convenience

<b>STANLEY</b>	Length in mm	Description			
0-10-810	145	Knife	X	6	3253560108106
9-10-810	145	Display	-	12	3253569108107

## QUICKSLIDE SPORT UTILITY KNIFE

**STANLEY**



- Holster / Blade Bonus Options
- Available in Merchandiser
- Thumb Slider - For Easy operation of Utility Blade
- Interlock mechanism allows 1 blade NOT both to be exposed at a time
- Spine Lock- Lock and Release the Sports Blade for Safety
- Thumb Grip - Easy to Open Sports Blade One Handed
- No Tools Utility Blade Change – Easy to replace blades
- Standard Utility Blade
- 3" / 75mm Serrated Sport Blade
- Zinc Blade Slider for durability and strength

<b>STANLEY</b>	Length in mm			
0-10-813	120	X	2	3253560108137
9-10-813	120	X	12	3253569108138

**NEW**

## 14 IN 1 FOLDING LOCKING MULTI TOOL

**STANLEY**



- Patented Locking Mechanism
- Hassle Free and Secure Tool Selection
- Durable Body with Steel Inserts
- Site Tough
- Sockets and ¼" Bits
- Versatile Range of Tools for Any Job
- Folding Design
- Compact and Portable

<b>STANLEY</b>				
STHT0-70695		X	6	3253560706951



## 12 IN 1 MULTI-TOOL

**STANLEY**



- 12 tools in 1: 1. Universal pliers with serrated noses 2. Wire cutter 3. Saw 4. Small knife 5. Large knife 6. Bottle opener 7. Curve jaw pliers 8. 3 mm flared screwdriver 9. 6 mm flared screwdriver 10. 8 mm flared screwdriver 11. Phillips 1 screwdriver 12. File
- Stainless steel construction
- Polished finish
- Ergonomic handle
- Easy access to tools
- Ideal for everyday uses at work (industry, automotive & construction) or at home
- Supplied with a STANLEY branded pouch with a belt clip
- Length when open: 165mm
- Length when bent: 105mm

<b>STANLEY</b>				
0-84-519		X	5	3253560845193

## 110MM FOLDING POCKET KNIFE

**STANLEY**



- Pocket craft knife with a retractable blade
- Metal body for strength
- Supplied with 2 X 5901 blades

<b>STANLEY</b>	Length in mm			
0-10-598	110	X	12	5000366105987

## DISPOSABLE CRAFT KNIFE

**STANLEY**



- Disposable craft knife for precision works
- Supplied with 5901 blade
- Blades protected by a plastic guard for long life
- A tapered plastic body allows precision blade control

<b>STANLEY</b>	Length in mm	Number of pieces			
1-10-601	140	50	-	50	3253561106019

## 5901 SLIMKNIFE BLADE

**STANLEY**



- Straight general purpose light duty blade for modelling and craft work
- For use with 10-590 Craft Knife
- Universal use

<b>STANLEY</b>	Blade length in mm			
0-11-221	60	X	10	3253560112219
1-11-221	60	-	1	3253561112218

## HOBBY

**STANLEY**

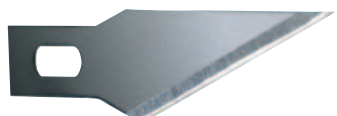


- For fine and precision work
- Supplied with a 11-411 blade for 10-401 and a 11-413 blade for 10-402
- Positive blade blocking
- Metal guilloche pattern handle

<b>STANLEY</b>	Length in mm			
<b>0-10-401</b>	120	X	6	3253560104016

## SHARP-ANGLED BLADES FOR HOBBY CRAFT KNIFE

**STANLEY**



- For craft knife 10-401 and 10-402
- Hardened steel
- Sharp angle blade

<b>STANLEY</b>	Blade length in mm			
<b>0-11-411</b>	45	X	10	3253560114114

## PROFESSIONAL GLASS SCRAPER

**STANLEY**



- Professional quality
- Retractable rectangular blade
- Brass push button
- Metal body
- Ideal tool to remove paint, glue...
- Replacement blades 0-28-510 and 1-11-515

<b>STANLEY</b>	Blade width in mm			
<b>0-28-500</b>	40	X	10	3253560285005
<b>0-28-510</b>	40	X	10	3253560285104
<b>1-11-515</b>	40	-	1	3253561115158

## PAINT SCRAPER

**STANLEY**

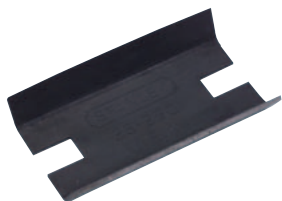


- Hardened resharpenable blade
- 2-edged blade
- Synthetic handle scraper
- Four-edged blade, two edges for trimming
- Made of black plastic, black finish, with steel bolt heart

<b>STANLEY</b>	Blade width in mm	Length in mm			
<b>0-28-616</b>	25	155	X	6	3253560286163
<b>0-28-617</b>	38	180	X	6	3253560286170
<b>0-28-619</b>	64	230	X	6	3253560286194

## PAINT SCRAPER SPARE BLADES

**STANLEY**



- Blade 2 edges
- Tempered steel blade and regrindable

<b>STANLEY</b>	Blade length in mm	Description			
0-28-631	25	Replacement blade	X	5	3253560286316
0-28-290	38	Replacement blade	X	5	3253560282905
0-28-292	64	Replacement blade	X	5	3253560282929

## WINDOW SCRAPER

**STANLEY**



- Ideal for removing excess paint/stickers from windows
- Supplied with 1 heavy duty blade
- Yellow plastic handle with Stanley heavy duty blade

<b>STANLEY</b>	Blade width in mm	Length in mm			
0-28-590	60	170	X	12	5000366105932

## 45 MM ROTARY CUTTER

**STANLEY**



- Accepts both Stanley and OLFA 45 mm rotary blades
- Ideal for cutting curves – heavily used in fabrics / craft application
- Ergonomic slip resistant handle
- Designed for both left and right handed use
- Heavy duty rotary blade ground and sharpen

<b>STANLEY</b>	Length in m			
STHT0-10194	175	X	4	3253560101947

## 45MM ROTARY BLADE X 1 (REFIL)

**STANLEY**



<b>STANLEY</b>	Diameter in mm			
STHT0-11942	45	X	4	3253560109424



**NEW**

## FATMAX® TUNGSTEN CARBIDE UTILITY BLADES

**STANLEY**


- NEW Longest lasting blade on the job site
- Improved durability and wear – lasts more than 5 times longer than competitive utility blades
- NEW Tungsten Carbide Powder Deposited Through a High Powered Laser
- Tungsten carbide durability and hardness is second only to diamond
- NEW ONLY a carbide edge allows rest of blade to remain flexible (carbide is much more brittle than steel)

<b>STANLEY</b>	Blade width in mm	Blade length in mm			
<b>0-11-800</b>	19	62	X	10	3253560118006
<b>2-11-800</b>	19	62	X	10	3253562118004
<b>8-11-800</b>	19	62	X	6	3253568118008

## FATMAX® UTILITY BLADE

**STANLEY**  
**FatMax**


- Heat treated back allows blade to flex and spring back whilst maintaining snap resistance
- Induction hardened edge ensures 75% longer life
- S3 cutting technology makes blade 35% sharper
- Resistant up to 35 kg
- 20% stronger
- New geometry of the blade: more edge
- Treatment by induction of the edge: increased resistance, lengthened lifespan

<b>STANLEY</b>	Blade length in mm	Height in mm	Thickness in mm	Number of pieces			
<b>2-11-700</b>	63	20	0.65	10	X	10	3253562117007
<b>4-11-700</b>	63	20	0.65	50	-	1	3253564117005
<b>1-11-700</b>	63	20	0.65	100	-	1	3253561117008

## 1991 TRIMMING KNIFE BLADE

**STANLEY**


- Normal duty general purpose blade ideal for paper, card, leather and most sheet materials
- Blades fit all standard Stanley knives (except 99E knife)
- Small 2-point reversible trapezoid blade
- Trapezoid blade with rounded ends to limit risks of injury
- Can be supplied as 5 units on a card, 10 units in a dispenser or 100 units in bulk

<b>STANLEY</b>	Blade length in mm	Height in mm	Thickness in mm	Holes	Number of pieces			
<b>0-11-911</b>	50	19	0.45	no	5	X	10	5000366119113
<b>1-11-911</b>	50	19	0.45	no	100	-	1	3253561119118
<b>2-11-911</b>	50	19	0.45	no	10	X	10	3253562119117
<b>3-11-908</b>	50	19	0.45	yes	10	X	10	3253563119086

## 1992 TRIMMING KNIFE BLADE

**STANLEY**

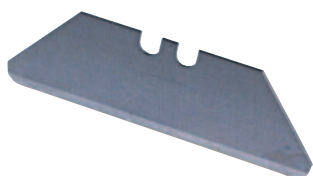


- The original and best heavy duty, general purpose blade
- Blades fit all standard Stanley knives
- Can be supplied as 5 units on a card, 10 units in a dispenser or 100 units in bulk
- Ideal for carpet, vinyl and any other material requiring a stiffer and stronger blade
- Long model for all types of cutting work
- Highly resistant large 2-point reversible trapezoid blade
- Trapezoid blade with rounded ends to limit risks of injury

STANLEY	Blade length in mm	Height in mm	Thickness in mm	Holes	Number of pieces			
0-11-921	62	19	0.65	no	5	X	10	5000366119212
1-11-921	62	19	0.65	no	100	-	1	3253561119217
2-11-921	62	19	0.65	no	10	X	10	3253562119216
3-11-916	62	19	0.65	yes	10	X	10	3253563119161
6-11-916	62	19	0.65	yes	100	-	1	3253566119168
1-11-916	62	19	0.65	yes	100	-	1	3253561119163

## 1992 ROUNDED TIP BLADE

**STANLEY**



- Ideal for opening cartons without tearing contents
- Ideal safety blade
- Trapezoid blade with rounded ends to limit risks of injury
- Blades fit Springback knife and 99E original Stanley retractable blade knife
- Heavy duty blade with rounded ends
- Thermal treatment of the steel

STANLEY	Length in mm	Height in mm	Thickness in mm	Number of pieces			
2-11-987	62	19	0.65	10	X	10	3253562119872

## 1996 TRIMMING KNIFE BLADE

**STANLEY**



- Sharpened hook with point for penetrating and cutting sheet material
- Blades fit all Stanley knives
- Can be supplied as 5 units on a card, 10 units in a dispenser or 100 units in bulk.
- Also ideal for plastic sheeting as used in packaging industry
- Sharpened hook blade with point ideal for penetrating cutting sheet material, in particular floor, roof and plastic coverings

STANLEY	Blade length in mm	Height in mm	Thickness in mm	Holes	Number of pieces			
0-11-983	50	19	0.65	no	5	X	10	5000366119618
2-11-983	50	19	0.65	no	10	X	10	3253562119834
1-11-983	50	19	0.65	no	100	-	1	3253561119835
1-11-802	50	19	0.65	yes	100	-	1	3253561118029
3-11-802	50	19	0.65	yes	10	X	10	3253563118027

## 1995 H

**STANLEY**



- With large central hole for carpet leveller
- Reversible large twin hook blade
- Ideal for thick carpets

<b>STANLEY</b>	Blade length in mm	Height in mm	Thickness in mm	Number of pieces			
1-11-967	55	19	0.65	100	-	1	3253561119675

## LINOLEUM BLADE

**STANLEY**



- Pruning knife blade in high resistance hardened steel for fixed blade knives

<b>STANLEY</b>	Blade length in mm			
0-11-980	80	X	10	3253560119805

## 5192 CONCAVE TRIMMING KNIFE BLADE

**STANLEY**



- Ideal where accuracy is paramount
- Concave blade for precision cuts on leather and marquetry
- Ideal for all models except 10-550 Titan Fixed blade Knife and 10-199 199E Fixed Blade Knife

<b>STANLEY</b>	Blade length in mm	Height in mm	Thickness in mm	Number of pieces			
0-11-952	60	19	0.65	5	X	10	3253560119522
1-11-952	60	19	0.65	100	-	1	3253561119521

**NEW**

## FATMAX® TUNGSTEN CARBIDE SNAP OFF BLADES 18MM

**STANLEY**  
**FatMax**®


- 5X SHARPER - LONGER
- NEW Longest lasting blade on the job site
- Improved durability and wear – lasts more than 5 times longer than competitive utility blades
- NEW Tungsten Carbide Powder Deposited Through a High Powered Laser
- Tungsten carbide durability and hardness is second only to diamond
- NEW ONLY a carbide edge allows rest of blade to remain flexible (carbide is much more brittle than steel)

<b>STANLEY</b>	Size in mm			
<b>STHT0-11818</b>	18	X	10	3253560118181
<b>STHT2-11818</b>	18	X	10	3253562118189
<b>STHT8-11818</b>	18	X	6	3253568118183

**NEW**

## FATMAX® TUNGSTEN CARBIDE SNAP OFF BLADES 25MM

**STANLEY**  
**FatMax**®


- 5x SHARPER - LONGER
- NEW Longest lasting blade on the job site
- Improved durability and wear – lasts more than 5 times longer than competitive utility blades
- NEW Tungsten Carbide Powder Deposited Through a High Powered Laser
- Tungsten carbide durability and hardness is second only to diamond
- NEW ONLY a carbide edge allows rest of blade to remain flexible (carbide is much more brittle than steel)

<b>STANLEY</b>	Size in mm	Number of pieces			
<b>STHT0-11825</b>	25	5	X	10	3253560118259
<b>STHT3-11825</b>	25	20	X	10	3253563118256

## FATMAX® 18MM BLADE

**STANLEY**  
**FatMax**®


- Treatment by induction of the edge: increased resistance
- New geometry of blade: more edge
- Blade with 8 sectile elements
- More 25% of resistance and lifespan

<b>STANLEY</b>	Size in mm	Number of pieces			
<b>2-11-718</b>	18	10	X	10	3253562117182
<b>3-11-718</b>	18	50	-	1	3253563117181

## FATMAX® 25MM BLADE

**STANLEY**  
**FatMax**



- Treatment by induction of the edge: increased resistance
- New geometry of blade: more edge
- Blade with 7 sectile elements
- More 50% of resistance and lifespan

STANLEY	Size in mm	Number of pieces			
2-11-725	25	10	X	10	3253562117250
3-11-725	25	20	-	10	3253563117259

## SNAP OFF KNIFE BLADES - 9 MM

**STANLEY**

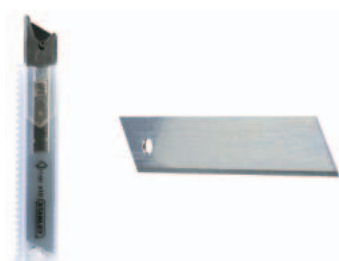


- Spare blade dispenser with blade breaker and storage of used segments
- 12 breakable blade segments
- Blade for 9.5 mm cutter

STANLEY	Size in mm	Number of pieces			
0-11-300	9	10	X	10	3253560113001
1-11-300	9	100	-	1	3253561113000

## SNAP OFF KNIFE BLADES - 18 MM

**STANLEY**



- Thickness 0.55 mm
- Spare blade dispenser with blade breaker and storage of used segments
- Reinforced thickness - specially for intensive use
- 7 breakable blade segments
- Blade for 18 mm cutter

STANLEY	Size in mm	Number of pieces			
0-11-301	18	10	X	10	3253560113018
3-11-301	18	50	-	1	3253563113015
1-11-301	18	100	-	1	3253561113017

## EXTRA THICK SNAP OFF BLADES - 18 MM

**STANLEY**



- Replacement blade dispenser with blade breaker system and storage of used segments
- Reinforced thickness - specially for intensive use
- 7 breakable blade segments
- Extra thick: 0,63 mm

STANLEY	Size in mm	Number of pieces			
0-11-219	18	8	X	10	3253560112196






## SNAP OFF KNIFE BLADES - 25 MM

**STANLEY**



- Spare blade dispenser with blade breaker and storage of used segments
- Improved performance during intensive work
- Reinforced thickness: specially for intensive use (1mm thick) 6 breakable blade segments

<b>STANLEY</b>	<b>Size in mm</b>	<b>Number of pieces</b>			
<b>0-11-325</b>	25	10	X	10	3253560113254
<b>1-11-325</b>	25	20	-	10	3253561113253

BLADES RANGE GUIDE										
				Carbide Blades 11-800 FatMax Blades 11-700 1992 Blades 11-921	1991 Blades 11-911	1992 Round - Nose Safety Blade 11-987	1996 Blades 11-983	5192 Concave Blades 11-952	5901 Slimknife Blades 11-221  5905 Slimknife Blades 11-115	Saw Blades for Wood 15-276  Saw Blades for Metal 15-277
CODE			DESCRIPTION							
FIXED BLADE KNIVES		0-10-818	FatMax® Xtreme™ Fixed Blade Knife	●	●		●	●		●
		0-10-780	FatMax Fixed Blade Knife	●	●		●	●		●
		1-10-550	Titan Fixed Blade Knife	●	●		●			●
		0-10-010	Interlock Fixed Blade Knife	●	●	●	●	●		●
		2-10-199	199 E Knife	●	●		●			●
		0-10-299	Utility Knife	●	●		●	●		●
		0-10-129	199 E Saw Knife Set	●	●		●	●		●
RETRACTABLE BLADE KNIVES		0-10-789	FatMax® Xtreme™ Twin Blade Knife	●	●		●	●		
		0-10-819	FatMax® Xtreme™ Retractable Blade Knife	●	●		●	●		
		0-10-778	FatMax RB Blade Knife	●	●		●	●		
		1-10-122	Titan Retractable Knife	●	●		●	●		
		1-98-456	Quick Change Knife	●	●		●	●		
		0-10-020	Interlock Knife	●	●		●	●		
		0-10-779	DynaGrip® Retractable Blade Knife	●	●		●	●		
		0-10-189	Springback Safety Knife	●	●	●	●	●		
		0-10-810	Quickslide Pocket Knife	●	●		●	●		
		2-10-099	Original Stanley 99E Retractable Blade Knife	●		●	●	●		
		0-10-088	Retractable Blade Utility Knife	●	●		●	●		
CRAFT KNIVES		0-10-590	Interlock Craft Knife						●	
WINDOW SCRAPER		0-28-590	Window Scraper	●			●			